

The logo for Behavioral Health Network (bhn) features the lowercase letters 'bhn' in a white serif font, set against a blue background with a white curved line above the letters.

Behavioral Health Network

Gándara Center

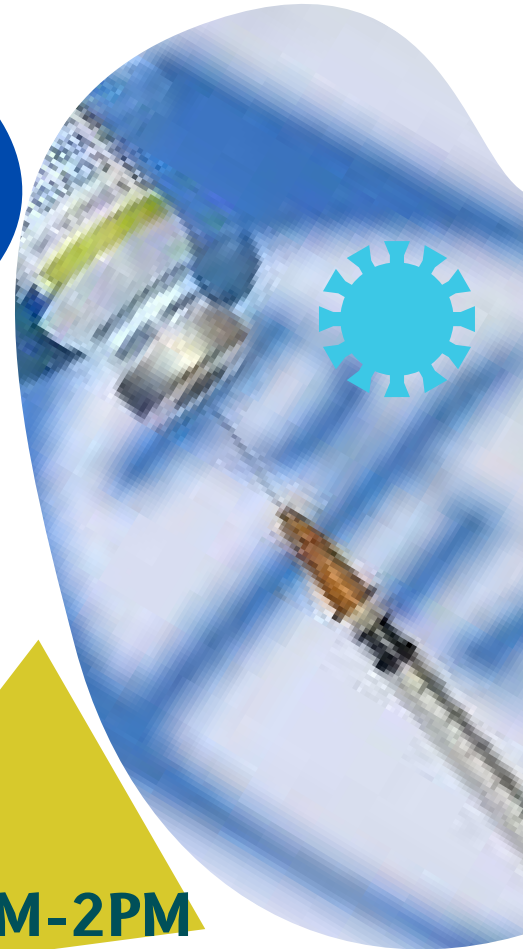
Culturally Sensitive Care



JGS LIFECARESM

Guided by Jewish Values. Serving All Faiths.

COVID & FLU Vaccination Clinic



**Genesis Community Room
on the JGS Lifecare Campus,
780 Converse Street, Longmeadow
Follow signs. Wed, Jan 12th from 10AM-2PM**

**AGES 5+ | Boosters available for those eligible.
Pfizer, Moderna, and Johnson & Johnson's Janssen
COVID vaccines PLUS Flu vaccines are available.
15-minute observation required.**

Call Mary-Anne @ JGS Lifecare
with any questions: 413-310-4693

REGISTER:
<https://bit.ly/jgsvax>

Registration not required,
but suggested.